

**TENANTS 4, 5 & 6
PLUMBING FLOOR PLAN**
SCALE: 1/8" = 1'-0"

- PLAN NOTES:**
- 1 GAS METER TREE BY LOCAL GAS COMPANY WITH (6) GAS METERS SIZED FOR 210,000 BTU AT 2 PSI DELIVERY PRESSURE EACH.
 - 2 DROP 3/4" (2 PSI) GAS LINE DOWN FROM CEILING TO SERVE UNIT HEATER. INSTALL 2 PSI TO OZ. REGULATOR SIZED FOR ACTUAL BTU LOAD OF UNIT HEATER SUPPLIED AND VENT REGULATOR TO THE EXTERIOR AS REQUIRED. CONNECT 3/4" OZ. GAS LINE TO UNIT HEATER COMPLETE WITH SHUT-OFF VALVE, FLEXIBLE CONNECTION AND DIRT LEG. SEE DETAIL ON SHEET P-3
 - 3 SEE CIVIL SITE PLAN FOR CONTINUATION OF 4" SEWER MAIN FROM BUILDING TO SEPTIC SYSTEM.
 - 4 INSTALL WATER HEATER ON ANGLE IRON STAND ABOVE JANITOR SINK. SEE DETAIL ON SHEET P-3.
 - 5 ALL GAS AND DOMESTIC WATER PIPING TO BE RUN AS HIGH AS POSSIBLE IN BUILDING.
 - 6 ROUGH-IN WASTE AND VENT PIPING UNDER SLAB FOR FUTURE TOILET, LAVATORY, FLOOR DRAIN AND FLOOR MOUNTED JANITOR SINK IN TENANT #4. CAP WASTE AND VENT PIPING AT 6" A.F.F.

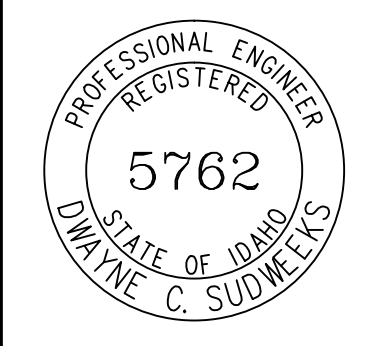
LICENSED ARCHITECT AR-2650
MARLA R. MORGAN
STATE OF IDAHO

Marla Morgan, Architect
Ph: 208.270.2244
F-MAIL: morgnrmr@cobleone.net

OWNER: HEYREND PROPERTIES, LLC
New Warehouse Building
Location: Heyrend Way Idaho Falls, Idaho 83402

SHEET CONTENTS
**TENANTS 4, 5 & 6
PLUMBING FLOOR PLAN**

ORIGINAL DRAWING SIGNED BY: DWAYNE C. SUDWEEKS
DATE ORIGINAL SIGNED: JULY 19, 2019
ORIGINAL ON FILE AT ENGINEERED SYSTEMS ASSOCIATES
1355 EAST CENTER, POCATELLO, IDAHO 83201



Engineered Systems Associates
1355 EAST CENTER
POCATELLO, IDAHO 83201
PHONE: (208) 233-0501
FAX: (208) 233-0529
EMAIL: esa@engsystems.com
ESA JOB NUMBER: 19032

REVISIONS	NO.	DATE	DESCRIPTION

SHEET NUMBER
P-2 OF 3